

WHEN THE PRESSURE IS ON YOUR FUEL HANDLE IT WITH ULTIMATE D



Ultimate D Cold-Flo is formulated to enhance cold weather performance of all diesel powered equipment with special emphasis on equipment that experiences extended periods of shutdown. New and improved for winter fuels, **Ultimate D Cold-Flo** will deliver exceptional cold weather performance when and where required.

In Addition **Ultimate D Cold-Flo** may be continuously or batch blended into diesel fuel as a concentrate or as a stock solution. Proper blending and handling procedures must be followed due to the nature of all low temperature operability additives.

Blend the additive with the fuel at temperatures at least 10F degrees above the cloud point of the fuel. Ensure the additive is at or above the minimum handling temperatures to avoid potential performance issues. Verify that the additive is completely dissolved into the fuel.

Domestic Fuel & Lubes now offers the **Ultimate Year-Round Protection** for your fleet!

Building on the successful 2012 launch of Domestic Fuel & Lubes **Ultimate D Premium** diesel fuel, their product development team is proud to add **Ultimate D Cold-Flo** to their additive program. Once again, Domestic Fuels & Lubes has partnered with Advanced Fuel Solutions, a preeminent fuel quality solutions company, to bring you and your fleet the latest generation cold flow technology, winter weather issues become a thing of the past.

The delivery of **Ultimate D Cold-Flo** will take the guess work and hassle out of treating individual trucks and storage tanks. Your Fuel will arrive treated at the proper dose rate ensuring your fleet gets total protection from icing and wax crystals and maximizing up-time.

Features	Benefits	Advantages
Enhanced Wax Modifier	<ul style="list-style-type: none"> Keeps wax crystals small Reduces cold filter plugging Lowers fuel pour point by 8F-12F 	<ul style="list-style-type: none"> Significantly reduced use of kero blends Less filter changes/Less engine downtime Keeps fuel flowing in extreme cold
Proprietary Wax Anti-Settling Agent Additive (WASA)	<ul style="list-style-type: none"> Suspends wax crystals in diesel fuel for up to 96 hours 	<ul style="list-style-type: none"> Easier cold weather start-ups during prolonged engine shut-down
Contains a Jet Fuel Deicer	<ul style="list-style-type: none"> Helps prevent fuel system from icing up 	<ul style="list-style-type: none"> Controls moisture in the fuel
Works well in many types of distillate base fuel stocks	<ul style="list-style-type: none"> Effective in biodiesel blends 	<ul style="list-style-type: none"> Only need to inventory one additive

Domestic Fuels & Lubes Mission Statement:

"At every encounter with Domestic Fuels & Lubes, the customer must perceive that they have been helped and that they are appreciated."



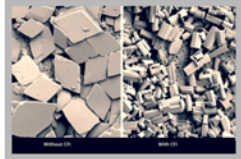
"There When You Need Us!"

ULTIMATE D COLD-FLO With WASA



ULSD is prone to gelling in cold weather, meaning the solidification of ULSD into a partially crystalline state. A percentage of the fuel contains wax (paraffin) molecules. The more wax in the fuel, the higher the BTU value. However, excessive wax in fuel causes cold temperature operating problems. Below the Cloud point, fuel begins to develop solid wax particles giving it a cloudy appearance and, if the temperature is sufficiently low, enough heavy wax platelets will form to block the fuel filter creating fuel starvation and resultant down-time. **EXAMPLE BELOW!**

Get ahead of cold weather performance issues for all diesel-powered equipment applications, with special emphasis focused on equipment subjected to extended shutdowns. **Call Domestic Today!**



Wax Crystals

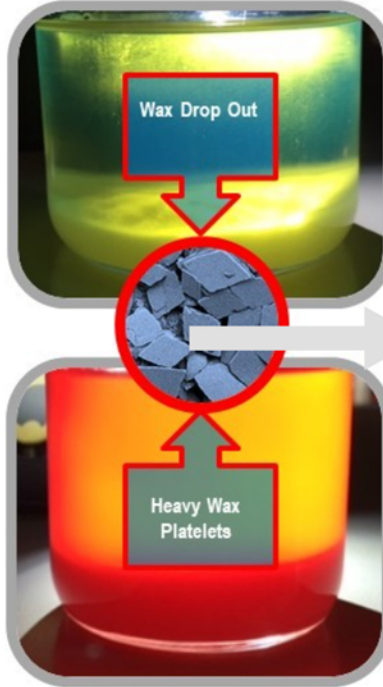


Paraffin Wax Restricting Fuel Flow

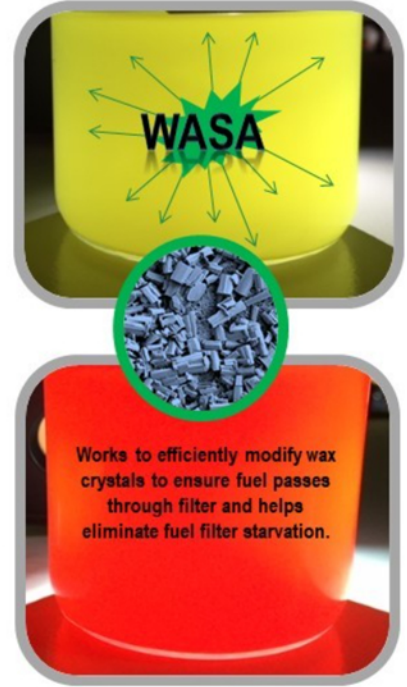


Free Water Ice Crystals Creates Abrasive Wear In Fuel System

Without Treatment



Treated with Ultimate D Cold-Flo
See the difference as it disperses wax allowing for combustion



Recommended Treatment
1 gallon to 3,000 gallons of ULSD



Domestic is a proud Supporter of the Petroleum Quality Institute of America

Typical Properties

Appearance	Hazy Yellow
Specific Gravity, 60 F	0.911
Density, lb./gal, 60 F	486
Flash Point, PMCC	112 F
Viscosity, cSt @ 40 C	6.8
Pour Point, F	-10 F
Recommended Treat Rate	1 to 3,000